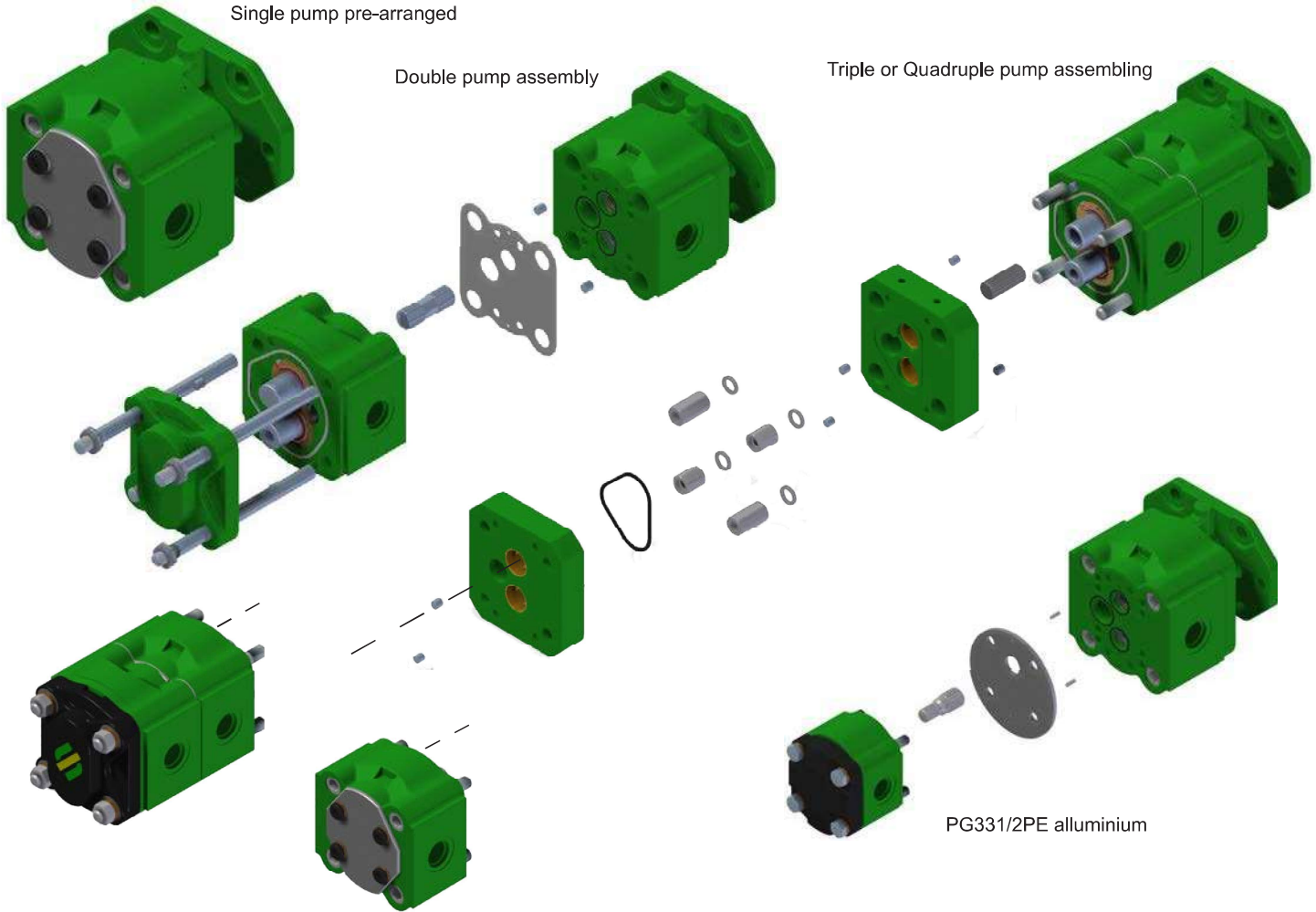
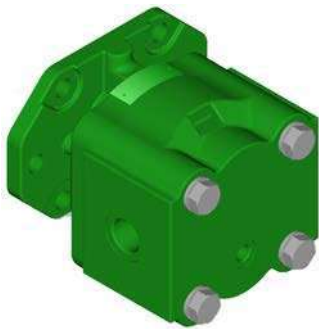


## PG331 - CAST IRON GEAR PUMP(BUILD PROGRAM)

Sharing the same features of PG330 series, in terms of dimensions and working conditions, this version has been created for dealers and offers the following possibilities



## MG330 - CAST IRON MOTORS



- Cast iron front flanges and rear bodies.
- High volumetric efficiency throughout the full pressure range, by narrow machining tolerance range and by floating thrust plates, that ensure axial compensation too.
- High pressure capability by DU bearings
- 12-Teeth gear with shaft (one-piece construction)
- Double shaft seals
- Flanges: European, SAE B, SAE C
- Ports: European and SAE Standards

E0.000.0415.11.04IM00

<b>MG330</b>		34	40	47	55	64	72
Type							
Displacements	cm <sup>3</sup> /rev	34.4	40.3	47.4	55.2	64.3	73.4
	cu.in./rev	2.1	2.46	2.89	3.37	3.92	4.48
Max. continuous pressure P1	bar	240	220	240	220	200	200
	psi	3480	3190	3480	3190	2900	2900
Max. starting pressure P2	bar	300	280	280	280	260	260
	psi	4350	4060	4060	4060	3770	3770
Max. speed at P2		3000	2700	2700	2700	2500	2500
Min. speed at P1	rpm	600	550	550	550	500	500