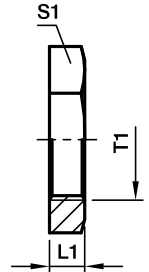


## GM Locknut for bulk heads

For bulkhead SV and WSV

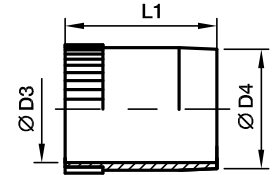


Series	Tube O.D.	T1	L1	S1	Weight g/1 piece	Order code		
						Steel CF	Stainless Steel 71	Brass MS
L <sup>3)</sup>	06	M 12×1.5	6	17	7	GM06LCFX	GM06L71X	GM06LMSX
	08	M 14×1.5	6	19	8	GM08LCFX	GM08L71X	GM08LMSX
	10	M 16×1.5	6	22	11	GM10LCFX	GM10L71X	GM10LMSX
	12	M 18×1.5	6	24	12	GM12LCFX	GM12L71X	GM12LMSX
	15	M 22×1.5	7	30	23	GM15LCFX	GM15L71X	GM15LMSX
	18	M 26×1.5	8	36	37	GM18LCFX	GM18L71X	GM18LMSX
	22	M 30×2.0	8	41	46	GM22LCFX	GM22L71X	GM22LMSX
	28	M 36×2.0	9	46	58	GM28LCFX	GM28L71X	GM28LMSX
	35	M 45×2.0	9	55	71	GM35LCFX	GM35L71X	GM35LMSX
	42	M 52×2.0	10	65	123	GM42LCFX	GM42L71X	GM42LMSX
S <sup>4)</sup>	06	M 14×1.5	6	19	8	GM08LCFX	GM08L71X	GM06LMSX
	08	M 16×1.5	6	22	11	GM10LCFX	GM10L71X	GM10LMSX
	10	M 18×1.5	6	24	12	GM12LCFX	GM12L71X	GM12LMSX
	12	M 20×1.5	6	27	15	GM12SCFX	GM12S71X	GM12SMSX
	14	M 22×1.5	7	30	23	GM15LCFX	GM15L71X	GM15LMSX
	16	M 24×1.5	7	32	24	GM16SCFX	GM16S71X	GM16SMSX
	20	M 30×2.0	8	41	46	GM22LCFX	GM22L71X	GM22LMSX
	25	M 36×2.0	9	46	58	GM28LCFX	GM28L71X	GM28LMSX
	30	M 42×2.0	9	50	58	GM30SCFX	GM30S71X	GM30SMSX
	38	M 52×2.0	10	65	123	GM42LCFX	GM42L71X	GM42LMSX

<sup>3)</sup> L = light series; <sup>4)</sup> S = heavy series

## VH Support sleeve

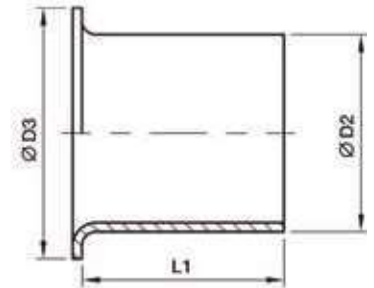
for thin-walled metal tubing



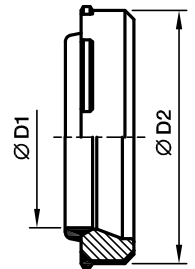
Tube I.D.	D3	D4	L1	Weight g/1 piece	Order code		
					Steel CF	Stainless Steel 71	Brass MS
4.00	2.6	3.8	14.0	0.7	VH04CFX	VH0471X	VH04MSX
4.50	3.1	4.3	14.0	0.8	VH04.5CFX	VH04.571X	VH04.5MSX
5.00	3.6	4.8	14.0	0.8	VH05CFX	VH0571X	VH05MSX
6.00	4.6	5.8	14.0	1.0	VH06CFX	VH0671X	VH06MSX
6.50	5.1	6.3	14.0	1.0	VH06.5CFX	VH06.571X	VH06.5MSX
7.00	5.6	6.8	15.5	1.3	VH07CFX	VH0771X	VH07MSX
8.00	6.6	7.8	15.5	1.6	VH08CFX	VH0871X	VH08MSX
9.00	7.6	8.8	15.5	1.8	VH09CFX	VH0971X	VH09MSX
10.00	8.6	9.8	15.5	2.1	VH10CFX	VH1071X	VH10MSX
10.05	8.6	9.8	15.5	2.1	VH10.05CFX	VH10.0571X	VH10.05MSX
10.50	9.1	10.3	15.5	2.3	VH10.5CFX	VH10.571X	VH10.5MSX
11.00	9.6	10.8	15.5	2.6	VH11CFX	VH1171X	VH11MSX
12.00	10.2	11.8	17.0	3.7	VH12CFX	VH1271X	VH12MSX
12.95	11.2	12.8	17.0	3.9	VH12.95CFX	VH12.9571X	VH12.95MSX
13.00	11.2	12.8	17.0	3.9	VH13CFX	VH1371X	VH13MSX
14.00	12.2	13.8	17.0	4.3	VH14CFX	VH1471X	VH14MSX
15.00	13.2	14.8	20.0	5.7	VH15CFX	VH1571X	VH15MSX
16.00	14.2	15.8	20.0	5.8	VH16.00CFX	VH16.0071X	VH16.00MSX
16.20	14.2	15.8	20.0	5.8	VH16CFX	VH1671X	VH16MSX
17.00	15.2	16.8	20.0	6.3	VH17CFX	VH1771X	VH17MSX
18.00	16.2	17.8	20.0	6.3	VH18CFX	VH1871X	VH18MSX
19.00	17.2	18.8	16.0	5.8	VH19CFX	VH1971X	VH19MSX
19.90	18.2	19.8	21.5	7.9	VH19.90CFX	VH19.9071X	VH19.90MSX
20.00	18.2	19.8	21.5	7.9	VH20CFX	VH2071X	VH20MSX
21.00	19.2	20.8	21.5	8.0	VH21CFX	VH2171X	VH21MSX
22.00	20.2	21.8	23.5	9.7	VH22CFX	VH2271X	VH22MSX
23.00	21.2	22.8	23.5	10.6	VH23CFX	VH2371X	VH23MSX
24.00	22.2	23.8	23.5	11.1	VH24CFX	VH2471X	VH24MSX
24.90	23.3	24.8	23.5	10.8	VH24.90CFX	VH24.9071X	VH2490MSX
25.00	23.2	24.8	23.5	10.8	VH25CFX	VH2571X	VH25MSX
26.00	24.2	25.8	23.5	12.7	VH26CFX	VH2671X	VH26MSX
27.00	25.2	26.8	23.5	12.2	VH27CFX	VH2771X	VH27MSX
30.00	27.8	29.8	26.5	18.7	VH30CFX	VH3071X	VH30MSX
31.00	28.8	30.8	26.5	20.7	VH31CFX	VH3171X	VH31MSX
32.00	29.8	31.8	26.5	19.2	VH32CFX	VH3271X	VH32MSX
32.10	29.8	31.8	26.5	19.2	VH32.10CFX	VH32.1071X	VH32.10MSX
33.00	30.8	32.8	26.5	19.9	VH33CFX	VH3371X	VH33MSX
34.00	31.8	33.8	26.5	26.5	VH34CFX	VH3471X	VH34MSX
37.80	35.8	37.7	31.0	19.5	VH37.8CFX	VH37.871X	VH37.8MSX
38.00	35.8	37.8	21.0	19.7	VH38CFX	VH3871X	VH38MSX
39.00	36.8	38.8	21.0	19.5	VH39CFX	VH3971X	VH39MSX

## E Tube/hose insert

for plastic tubing



Tube O.D.	Tube I.D.	D2	D3	L1	Weight g/1 piece	Order code Brass
04	2.0	2.0	3.5	8	1	<b>E04/02X</b>
04	2.5	2.5	4.0	8	1	<b>E04/2.5X</b>
05	3.0	3.0	5.0	14	1	<b>E0506/03X</b>
06	3.0	3.0	5.0	14	1	<b>E0506/03X</b>
05	4.0	4.0	5.0	14	1	<b>E0506/04X</b>
06	4.0	4.0	5.0	14	1	<b>E0506/04X</b>
08	4.0	4.0	6.6	14	1	<b>E08/04X</b>
06	5.0	5.0	6.0	14	1	<b>E06/05X</b>
08	5.0	5.0	6.0	14	1	<b>E08/05X</b>
10	6.0	6.0	8.0	15	1	<b>E0810/06X</b>
08	6.0	6.0	8.0	15	1	<b>E0810/06X</b>
10	8.0	8.0	10.0	15	1	<b>E10/08X</b>
12	8.0	8.0	12.0	15	2	<b>E12/08X</b>
12	9.0	9.0	12.0	15	2	<b>E12/09X</b>
12	10.0	10.0	12.0	15	2	<b>E1215/10X</b>
15	12.0	12.0	14.8	15	3	<b>E15/12X</b>
15	12.5	12.5	14.8	15	3	<b>E1516/12.5X</b>
16	12.5	12.5	14.8	15	3	<b>E1516/12.5X</b>
18	14.0	14.0	17.8	15	4	<b>E18/14X</b>
18	16.0	16.0	17.8	20	4	<b>E1820/16X</b>
20	16.0	16.0	17.8	20	4	<b>E1820/16X</b>
22	18.0	18.0	21.8	16	5	<b>E22/18X</b>

**DOZ EO-2 Soft sealing ring**


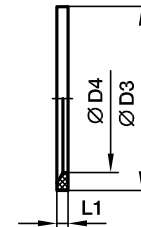
**Assembly direction:**  
Sealing lip shows to the tube end

Series	D1 	D2	Weight g/1 piece	Order code			
				Steel NBR	Steel FKM	Stainless Steel FKM	Stainless Steel NBR
LL <sup>2)</sup>	04	6.8	1	<b>DOZ04LL</b>	—	—	—
	06	8.8	1	<b>DOZ06LL</b>	—	—	—
L <sup>3)</sup>	06	10.3	1	<b>DOZ06L</b>	<b>DOZ06LVIT</b>	<b>DOZ06L71</b>	<b>DOZ06LNBR71</b>
	08	12.3	1	<b>DOZ08L</b>	<b>DOZ08LVIT</b>	<b>DOZ08L71</b>	<b>DOZ08LNBR71</b>
	10	14.3	2	<b>DOZ10L</b>	<b>DOZ10LVIT</b>	<b>DOZ10L71</b>	<b>DOZ10LNBR71</b>
	12	16.3	2	<b>DOZ12L</b>	<b>DOZ12LVIT</b>	<b>DOZ12L71</b>	<b>DOZ12LNBR71</b>
	15	20.3	3	<b>DOZ15L</b>	<b>DOZ15LVIT</b>	<b>DOZ15L71</b>	<b>DOZ15LNBR71</b>
	18	24.3	5	<b>DOZ18L</b>	<b>DOZ18LVIT</b>	<b>DOZ18L71</b>	<b>DOZ18LNBR71</b>
	22	27.7	6	<b>DOZ22L</b>	<b>DOZ22LVIT</b>	<b>DOZ22L71</b>	<b>DOZ22LNBR71</b>
	28	33.7	7	<b>DOZ28L</b>	<b>DOZ28LVIT</b>	<b>DOZ28L71</b>	<b>DOZ28LNBR71</b>
	35	42.7	14	<b>DOZ35L</b>	<b>DOZ35LVIT</b>	<b>DOZ35L71</b>	<b>DOZ35LNBR71</b>
	42	49.7	17	<b>DOZ42L</b>	<b>DOZ42LVIT</b>	<b>DOZ42L71</b>	<b>DOZ42LNBR71</b>
S <sup>4)</sup>	06	12.3	2	<b>DOZ06S</b>	<b>DOZ06SVIT</b>	<b>DOZ06S71</b>	<b>DOZ06SNBR71</b>
	08	14.3	2	<b>DOZ08S</b>	<b>DOZ08SVIT</b>	<b>DOZ08S71</b>	<b>DOZ08SNBR71</b>
	10	16.3	3	<b>DOZ10S</b>	<b>DOZ10SVIT</b>	<b>DOZ10S71</b>	<b>DOZ10SNBR71</b>
	12	18.3	4	<b>DOZ12S</b>	<b>DOZ12SVIT</b>	<b>DOZ12S71</b>	<b>DOZ12SNBR71</b>
	14	20.3	4	<b>DOZ14S</b>	<b>DOZ14SVIT</b>	<b>DOZ14S71</b>	<b>DOZ14SNBR71</b>
	16	22.3	5	<b>DOZ16S</b>	<b>DOZ16SVIT</b>	<b>DOZ16S71</b>	<b>DOZ16SNBR71</b>
	20	27.7	9	<b>DOZ20S</b>	<b>DOZ20SVIT</b>	<b>DOZ20S71</b>	<b>DOZ20SNBR71</b>
	25	33.7	13	<b>DOZ25S</b>	<b>DOZ25SVIT</b>	<b>DOZ25S71</b>	<b>DOZ25SNBR71</b>
	30	39.7	18	<b>DOZ30S</b>	<b>DOZ30SVIT</b>	<b>DOZ30S71</b>	<b>DOZ30SNBR71</b>
	38	49.7	27	<b>DOZ38S</b>	<b>DOZ38SVIT</b>	<b>DOZ38S71</b>	<b>DOZ38SNBR71</b>

<sup>2)</sup> LL = very light series; <sup>3)</sup> L = light series; <sup>4)</sup> S = heavy series

## ED Eolastic soft seal (for BSPP and metric parallel threads)

For Type: GE...ED, EGE...ED, EVGE...ED, EW...ED, EV...ED, ET...ED, EL...ED, VSTI...ED, RI...ED

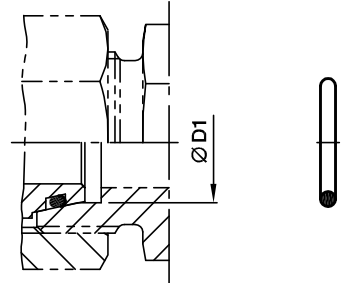


Male stud metric thread T1	Male stud BSP thread T1	D3	D4	L1	Weight g/1 piece	Order code NBR	Order code FKM
M 08×1.0		9.9	6.5	1.0	0.1	<b>ED8X1X</b>	<b>ED8X1VITX</b>
M 10×1.0	G 1/8 A	11.9	8.4	1.0	0.1	<b>ED10X1X</b>	<b>ED10X1VITX</b>
M 12×1.5		14.4	9.8	1.5	0.2	<b>ED12X1.5X</b>	<b>ED12X1.5VITX</b>
M 14×1.5	G 1/4 A	16.5	11.6	1.5	0.2	<b>ED14X1.5X</b>	<b>ED14X1.5VITX</b>
M 16×1.5		18.9	13.8	1.5	0.1	<b>ED16X1.5X</b>	<b>ED16X1.5VITX</b>
	G 3/8 A	18.9	14.7	1.5	0.2	<b>ED3/8X</b>	<b>ED3/8VITX</b>
M 18×1.5		20.9	15.7	1.5	0.1	<b>ED18X1.5X</b>	<b>ED18X1.5VITX</b>
M 20×1.5		22.9	17.8	1.5	0.2	<b>ED20X1.5X</b>	<b>ED20X1.5VITX</b>
	G 1/2 A	23.9	18.5	1.5	0.3	<b>ED1/2X</b>	<b>ED1/2VITX</b>
M 22×1.5		24.3	19.6	1.5	0.2	<b>ED22X1.5X</b>	<b>ED22X1.5VITX</b>
M 26×1.5	G 3/4 A	29.2	23.9	1.5	0.4	<b>ED26X1.5X</b>	<b>ED26X1.5VITX</b>
M 27×2.0	G 3/4 A	29.2	23.9	1.5	0.4	<b>ED26X1.5X</b>	<b>ED26X1.5VITX</b>
M 33×2.0	G 1 A	35.7	29.7	2.0	0.7	<b>ED33X2X</b>	<b>ED33X2VITX</b>
M 42×2.0	G 1 1/4 A	45.8	38.8	2.0	0.9	<b>ED42X2X</b>	<b>ED42X2VITX</b>
M 48×2.0	G 1 1/2 A	50.7	44.7	2.0	1.0	<b>ED48X2X</b>	<b>ED48X2VITX</b>

**OR O-Ring for fittings with EO 24° DKO swivel**

For Type:

DA, EGE, EGEO, MAVE, EW, EV, ET, EL, RED, GZ, GZR, VKA, VKAM

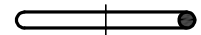
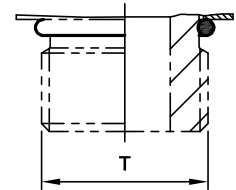


Series	D1 	O-ring NBR Shore-hardness approx. 90	O-ring FKM Shore-hardness approx. 90
L <sup>3)</sup>	6	<b>OR4.5X1.5X</b>	<b>OR4.5X1.5VITX</b>
	8	<b>OR6.5X1.5X</b>	<b>OR6.5X1.5VITX</b>
	10	<b>OR8.5X1.5X</b>	<b>OR8X1.5VITX</b>
	12	<b>OR10.5X1.5X</b>	<b>OR10X1.5VITX</b>
	15	<b>OR12.5X2X</b>	<b>OR12X2VITX</b>
	18	<b>OR16X2X</b>	<b>OR15X2VITX</b>
	22	<b>OR20X2X</b>	<b>OR20X2VITX</b>
	28	<b>OR26X2X</b>	<b>OR26X2VITX</b>
	35	<b>OR32X2.5X</b>	<b>OR32X2.5VITX</b>
	42	<b>OR39X2.5X</b>	<b>OR38X2.5VITX</b>
S <sup>4)</sup>	6	<b>OR4.5X1.5X</b>	<b>OR4.5X1.5VITX</b>
	8	<b>OR6.5X1.5X</b>	<b>OR6.5X1.5VITX</b>
	10	<b>OR8.5X1.5X</b>	<b>OR8X1.5VITX</b>
	12	<b>OR10.5X1.5X</b>	<b>OR10X1.5VITX</b>
	14	<b>OR12X2X</b>	<b>OR12X2VITX</b>
	16	<b>OR14X2X</b>	<b>OR13X2VITX</b>
	20	<b>OR17X2.5X</b>	<b>OR16.3X2.4VITX</b>
	25	<b>OR22X2.5X</b>	<b>OR20.3X2.4VITX</b>
	30	<b>OR27X2.5X</b>	<b>OR25.3X2.4VITX</b>
	38	<b>OR35X2.5X</b>	<b>OR33.3X2.4VITX</b>

<sup>3)</sup> L = light series; <sup>4)</sup> S = heavy series

## OR O-rings for male stud ends

Male metric thread – O-ring (ISO 6149)  
 Male UN/UNF thread – O-ring (ISO 11926)



Types with metric thread:  
 VSTI-OR, GEO, EGEO

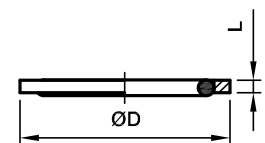
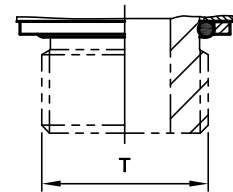
Thread T	O-ring NBR	O-ring FKM
M 08×1.0	<b>OR6.1X1.6</b>	<b>OR6.1X1.6VITX</b>
M 10×1.0	<b>OR8.1X1.6</b>	<b>OR8.1X1.6VITX</b>
M 12×1.5	<b>OR9.3X2.2</b>	<b>OR9.3X2.2VITX</b>
M 14×1.5	<b>OR11.3X2.2</b>	<b>OR11.3X2.2VITX</b>
M 16×1.5	<b>OR13.3X2.2</b>	<b>OR13.3X2.2VITX</b>
M 18×1.5	<b>OR15.3X2.2</b>	<b>OR15.3X2.2VITX</b>
M 22×1.5	<b>OR19.3X2.2</b>	<b>OR19.3X2.2VITX</b>
M 27×2.0	<b>OR23.6X2.9</b>	<b>OR23.6X2.9VITX</b>
M 33×2.0	<b>OR29.6X2.9</b>	<b>OR29.6X2.9VITX</b>
M 42×2.0	<b>OR38.6X2.9</b>	<b>OR38.6X2.9VITX</b>
M 48×2.0	<b>OR44.6X2.9</b>	<b>OR44.6X2.9VITX</b>

Types with UN/UNF thread:  
 GE-UNF

Thread T	O-ring NBR	O-ring FKM
7/16-20 UNF	<b>OR8.92X1.83</b>	<b>OR8.92X1.83VITX</b>
9/16-18 UNF	<b>OR11.89X1.98</b>	<b>OR11.89X1.98VITX</b>
3/4-16 UNF	<b>OR16.36X2.21</b>	<b>OR16.36X2.21VITX</b>
7/8-14 UNF	<b>OR19.18X2.46</b>	<b>OR19X2.5VITX</b>
1 1/16-12 UN	<b>OR23.47X2.95</b>	<b>OR23.47X2.95VITX</b>
1 5/16-12 UN	<b>OR29.74X2.95</b>	<b>OR29.74X2.95VITX</b>
1 5/8-12 UN	<b>OR37.46X3</b>	<b>OR37.46X3VITX</b>
1 7/8-12 UN	<b>OR43.69X3</b>	<b>OR43.69X3VITX</b>

## OR O-rings and retaining rings for male stud ends

Adjustable BSPP thread – O-ring + retaining ring (ISO 1179)



Types with BSPP thread: WEE-R

Thread T	O-ring NBR	Steel			O-ring FKM	Stainless Steel		
		D	L	Order code Retaining ring CF		D	L	Order code Retaining ring Stainless Steel
G 1/8 A	<b>OR8X1.88X</b>	14,8	1,4	<b>RRS1/8CF</b>	same like steel	15,0	1,4	<b>8207SS1/8</b>
G 1/4 A	<b>OR10.77X2.62X</b>	19,8	1,9	<b>RRS1/4CF</b>	<b>OR10.77X2.62VITX</b>	19,5	1,9	<b>8207SS1/4A</b>
G 3/8 A	<b>OR13.94X2.62X</b>	22,8	2,0	<b>RRS3/8CF</b>	same like steel	23,5	1,9	<b>8207SS3/8A</b>
G 1/2 A	<b>OR18X3.15X</b>	27,8	2,6	<b>RRS1/2CF</b>	<b>OR17.96X2.62VITX</b>	28,5	1,9	<b>8207SS1/2</b>
G 3/4 A	<b>OR23X3X</b>	32,8	2,5	<b>RRS3/4CF</b>	<b>OR23.47X2.62VITX</b>	34,5	1,9	<b>8207SS3/4</b>
G 1 A	<b>OR29.74X3.53X</b>	40,8	2,5	<b>RRS1CF</b>	same like steel	43,5	2,6	<b>8207SS1A</b>
G 1 1/4 A	<b>OR37.69X3.53X</b>	50,8	2,6	<b>RRS11/4CF</b>	same like steel	52,5	2,6	<b>8207SS11/4</b>
G 1 1/2 A	<b>OR44.04X3.53X</b>	55,8	2,6	<b>RRS11/2CF</b>	same like steel	60,0	2,6	<b>8207SS11/2</b>

Order code suffixes	
Material	Example
NBR	OR10.77X2.62X
FKM	OR10.77X2.62VITX

## OR O-Rings for banjo fittings WH/TH

For WH / TH	For WH / TH	O-ring NBR	O-ring FKM
06LM/LR		<b>OR9.3X1.5X</b>	<b>OR9.3X1.5VITX</b>
08LM/LR	06SM/SR	<b>OR12.5X1.5X</b>	<b>OR12.5X1.5VITX</b>
10LM/LR	08SM/SR	<b>OR12.5X1.5X</b>	<b>OR12.5X1.5VITX</b>
12LM/LR	10SM/SR	<b>OR16X1.5X</b>	<b>OR16X1.5VITX</b>
	12SR	<b>OR16X1.5X</b>	<b>OR16X1.5VITX</b>
15LM	12SM	<b>OR18X1.5X</b>	<b>OR18X1.5VITX</b>
15LR	14SM/SR	<b>OR20X1.5X</b>	<b>OR20X1.5VITX</b>
18LM/LR	16SM/SR	<b>OR20X1.5X</b>	<b>OR20X1.5VITX</b>
22LM/LR	20SM/SR	<b>OR25X2X</b>	<b>OR25X2VITX</b>
28LM/LR	25SM/SR	<b>OR33X2.5X</b>	<b>OR33X2.5VITX</b>
35LM/LR	30SM/SR	<b>OR41X2.5X</b>	<b>OR41X2.5VITX</b>
42LM/LR	38SM/SR	<b>OR46X3X</b>	<b>OR46X3VITX</b>

## OR O-Rings for banjo elbows SWVE..M/R KDSOMD

For SWVE..M/R KDSOMD	O-ring NBR
04LLR/-   06LLR/LLM   08LLR/LLM   06LR/LM	<b>OR9X1.2X</b>
08LM   06SM	<b>OR10X1.5X</b>
08LR   06SR   10LR/LM   08SR/LM	<b>OR12.5X1.5X</b>
12LR/LM   10SR/LM   12SR	<b>OR15X1.5X</b>
15LM   12SM	<b>OR16X1.5X</b>
15LR   14SR/-	<b>OR19X1.5X</b>
18LR/LM   16SR/SM	<b>OR20X1.5X</b>
22LR/LM   20SR/SM	<b>OR25.12X1.78X</b>
28LR/LM   25SR/SM	<b>OR33X2.5X</b>
35LR/LM   30SR/SM	<b>OR41X2.5X</b>
42LR/LM   38SR/SM	<b>OR46X3.0X</b>

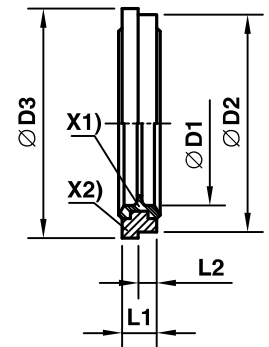
## DKI Sealing ring for pressure gauge connectors

Female thread	D1	D2	L1	Weight g/1 piece	Order code	
					Steel CF	Stainless Steel 71
G 1/4	6	11.3	4.5	2.5	<b>DKI1/4CFX</b>	<b>DKI1/471X</b>
G 1/2	12	18.5	5.0	5.0	<b>DKI1/2CFX</b>	<b>DKI1/271X</b>



## KDS Soft sealing ring for banjo fittings SWVE, WH and TH from steel

for small and wide spot faces of ports

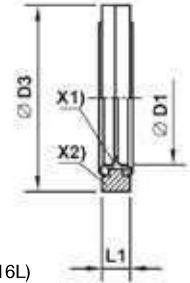


X1) NBR sealing  
X2) Supporting-ring (Steel)

Male stud metric thread	Male stud BSPP thread	D1	D2	D3	L1	L2	Weight g/1 piece	Order code
								Steel/NBR
M 10×1.0	G 1/8 A	10,3	14,9	16,0	2,5	1,1	2	<b>KDS10X</b>
M 12×1,5		12,3	17,0	18,0	3,0	1,6	2	<b>KDS12X</b>
M 14×1,5	G 1/4 A	14,3	18,9	20,0	3,0	1,6	2	<b>KDS14X</b>
M 16×1,5	G 3/8 A	17,0	21,9	24,0	3,0	2,1	3	<b>KDS16X</b>
M 18×1,5		18,3	23,9	23,9	3,0		4	<b>KDS18X</b>
M 22×1,5	G 1/2 A	22,3	26,9	30,0	4,5	2,6	7	<b>KDS22X</b>
M 26×1,5		26,3	31,9	35,0	3,5	2,6	7	<b>KDS26X</b>
M 27×2,0	G 3/4 A	27,3	32,9	38,0	3,5	2,6	8	<b>KDS27X</b>
M 33×2,0	G 1 A	33,6	39,9	42,0	3,5	2,6	10	<b>KDS33X</b>
M 42×2,0	G 1 1/4 A	42,4	49,9	49,9	3,5		12	<b>KDS42X</b>
M 48×2,0	G 1 1/2 A	48,4	55,9	60,0	3,5	2,6	16	<b>KDS48X</b>

## KD Soft sealing ring for banjo fittings WH/TH from stainless steel

for wide spot faces of ports

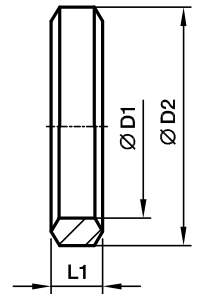


X1) Vulcanized FKM Seal  
X2) Supporting-ring (Stainless Steel 316L)

Metric thread parallel	BSPP thread parallel	D1	D3	L1	Weight g/1 piece	Order code Stainless steel FKM
M 10×1.0	G 1/8 A	10.3	17.0	2.5	3	<b>KD10-1/8SS</b>
M 12×1.5		12.3	22.0	3.0	5	<b>KD12SS</b>
M 14×1.5	G 1/4 A	14.3	22.0	3.0	5	<b>KD14-1/4SS</b>
M 16×1.5	G 3/8 A	17.0	27.0	3.0	6	<b>KD16-3/8SS</b>
M 18×1.5		18.3	29.0	3.0	8	<b>KD18SS</b>
M 22×1.5	G 1/2 A	22.3	32.0	4.5	12	<b>KD22-1/2SS</b>
M 26×1.5		26.3	41.0	3.5	18	<b>KD26SS</b>
M 27×2.0	G 3/4 A	27.3	41.0	3.5	19	<b>KD27-3/4SS</b>
M 33×2.0	G 1 A	33.6	46.0	3.5	18	<b>KD33-1SS</b>
M 42×2.0	G 1 1/4 A	42.4	57.0	3.5	26	<b>KD42-11/4SS</b>
M 48×2.0	G 1 1/2 A	48.4	64.0	3.5	35	<b>KD48-11/2SS</b>

## DKAZ Sealing ring

for low pressure banjos DSVW

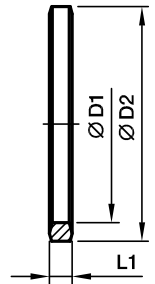


For DSVW		Metric thread parallel	D1	D2	L1	Weight g/1 piece	Order code Steel CF
06LM		M 10×1.0	10.1	14	3.2	2	<b>DKAZ10CFX</b>
08LM	06SM	M 12×1.5	12.1	17	4.2	3	<b>DKAZ12CFX</b>
10LM	08SM	M 14×1.5	14.1	19	4.5	4	<b>DKAZ14CFX</b>
12LM	10SM	M 16×1.5	16.1	21	4.5	4	<b>DKAZ16CFX</b>
15LM	12SM	M 18×1.5	18.1	23	4.5	5	<b>DKAZ18CFX</b>
	14SM	M 20×1.5	20.1	25	4.5	5	<b>DKAZ20CFX</b>
18LM	16SM	M 22×1.5	22.1	27	4.5	6	<b>DKAZ22CFX</b>
22LM		M 26×1.5	26.1	31	4.5	7	<b>DKAZ26CFX</b>
	20SM	M 27×2.0	27.1	32	5.0	8	<b>DKAZ27CFX</b>
28LM	25SM	M 33×2.0	33.1	39	6.0	15	<b>DKAZ33CFX</b>
35LM	30SM	M 42×2.0	42.1	49	6.5	22	<b>DKAZ11/4CFX</b>
42LM	38SM	M 48×2.0	48.1	55	6.5	25	<b>DKAZ11/2CFX</b>

For DSVW		BSP thread parallel	D1	D2	L1	Weight g/1 piece	Order code Steel CF
06LR		G 1/8 A	9.8	14	3.2	2	<b>DKAZ1/8CFX</b>
08LR/10LR	06SR/08SR	G 1/4 A	13.3	18	4.5	4	<b>DKAZ1/4CFX</b>
12LR	10SR/12SR	G 3/8 A	16.8	22	4.5	5	<b>DKAZ3/8CFX</b>
15LR/18LR	14SR/16SR	G 1/2 A	21.1	26	5.0	6	<b>DKAZ1/2CFX</b>
22LR	20SR	G 3/4 A	26.6	32	5.0	11	<b>DKAZ3/4CFX</b>
28LR	25SR	G 1 A	33.4	39	6.0	14	<b>DKAZ1CFX</b>
35LR	30SR	G 1 1/4 A	42.1	49	6.5	22	<b>DKAZ11/4CFX</b>
42LR	38SR	G 1 1/2 A	48.1	55	6.5	25	<b>DKAZ11/2CFX</b>

## DKA Sealing ring

for banjo fittings WH/TH and SWVE



BSP thread	D1	D2	L1	Weight g/1 piece	Order code	
					Steel CF	Stainless Steel 71
G 1/8 A	9,8	14	2,5	1	<b>DKA1/8CFX</b>	<b>DKA1/871X</b>
G 1/4 A	13,3	18	3,0	3	<b>DKA1/4CFX</b>	<b>DKA1/471X</b>
G 3/8 A	16,8	22	3,0	3	<b>DKA3/8CFX</b>	<b>DKA3/871X</b>
G 1/2 A	21,1	26	4,5	6	<b>DKA1/2X4,5CFX</b>	<b>DKA1/2X4,571X</b>
G 3/4 A	26,6	32	3,5	6	<b>DKA3/4CFX</b>	<b>DKA3/471X</b>
G 1 A	33,4	39	3,5	8	<b>DKA1CFX</b>	<b>DKA171X</b>
G 1 1/4 A	42,1	49	3,5	12	<b>DKA11/4CFX</b>	<b>DKA11/471X</b>
G 1 1/2 A	48,1	55	3,5	15	<b>DKA11/2CFX</b>	<b>DKA11/271X</b>

Male stud metric thread	D1	D2	L1	Weight g/1 piece	Order code	
					Steel CF	Stainless Steel 71
M 08x1,0	8,1	12	2,5	1	<b>DKA08CFX</b>	
M 10x1,0	10,1	14	3,0	1	<b>DKA10CFX</b>	<b>DKA1071X</b>
M 12x1,5	12,1	17	3,0	2	<b>DKA12CFX</b>	<b>DKA1271X</b>
M 14x1,5	14,1	19	3,0	3	<b>DKA14CFX</b>	<b>DKA1471X</b>
M 16x1,5	16,1	21	3,0	3	<b>DKA16CFX</b>	<b>DKA1671X</b>
M 18x1,5	18,1	23	3,0	3	<b>DKA18CFX</b>	<b>DKA1871X</b>
M 20x1,5	20,1	25	3,0	4	<b>DKA20CFX</b>	<b>DKA2071X</b>
M 22x1,5	22,1	27	4,5	6	<b>DKA22X4,5CFX</b>	<b>DKA22X4,571X</b>
M 26x1,5	26,1	31	3,5	6	<b>DKA26X3,5CFX</b>	<b>DKA26X3,571X</b>
M 27x2,0	27,1	32	3,5	6	<b>DKA27CFX</b>	<b>DKA2771X</b>
M 33x2,0	33,1	39	3,5	8	<b>DKA33CFX</b>	<b>DKA3371X</b>
M 42x2,0	42,1	49	3,5	12	<b>DKA11/4CFX</b>	<b>DKA11/471X</b>
M 48x2,0	48,1	55	3,5	15	<b>DKA11/2CFX</b>	<b>DKA11/271X</b>