



INNOVATING
IN HYDRAULIC
SOLUTIONS
FOR POWERING
THE FUTURE



Hydraulic solutions that power your business

We can help you compete more successfully with 40+ years of experience in hydraulics design, development, and manufacturing. Our unique Research + Development + Innovation approach continuously improves applications and solutions, so that you can win market opportunities with innovative offerings.

Hine's own superb engineering team provides competitive solutions that deliver first in class results. Customers worldwide rely on our high responsiveness and production capacity to move projects forward on time and on budget. We want you to succeed. From production through post-sales support, Hine provides a comprehensive package of products and services designed to gain the competitive advantage you seek.

Manufacturing Competitiveness, World-class Engineering, and Worldwide Distribution for:

- **Renewable Energy Sector**
- **Industrial Sector**

Today, our high-quality hydraulic systems, components, and cooling solutions are used in different heavy industries and for transforming wind and solar power into vital renewable energy sources.

Hine's dynamic team of 650 highly qualified employees is ready to help you gain a competitive advantage with its hydraulic solutions and cooling systems. We combine expert in-house engineering and development teams with a global manufacturing and distribution structure designed to respond quickly to your needs.

From production through aftermarket, Hine provides a comprehensive package of products and services designed to provide the competitive edge.

The Present & The Future

If your organization is engaged in building wind or solar systems, we can help you accelerate implementation to gain a market advantage and capitalize on this growth.

With Hine solutions, your systems will deliver maximum uptime and efficiency after deployment.

WIND POWER

Growth is in the wind

For more than two decades, Hine has delivered hydraulics and cooling systems to wind turbine manufacturers.

Our team designs, engineers, and manufactures hydraulic solutions for pitch control, yaw brake, rotor brake as well as supplying hydraulic fluid conveyance components.

Hine simplifies assembly and optimizes turbine capabilities by developing and supplying customized hydraulic kits to maximize value to customers' production lines, always oriented to meet their global needs.

65,000 WIND TURBINES
EQUIPPED BY HINE GLOBALLY

300,000 HUB ACCUMULATORS INSTALLED
(BLADDER AND PISTON)

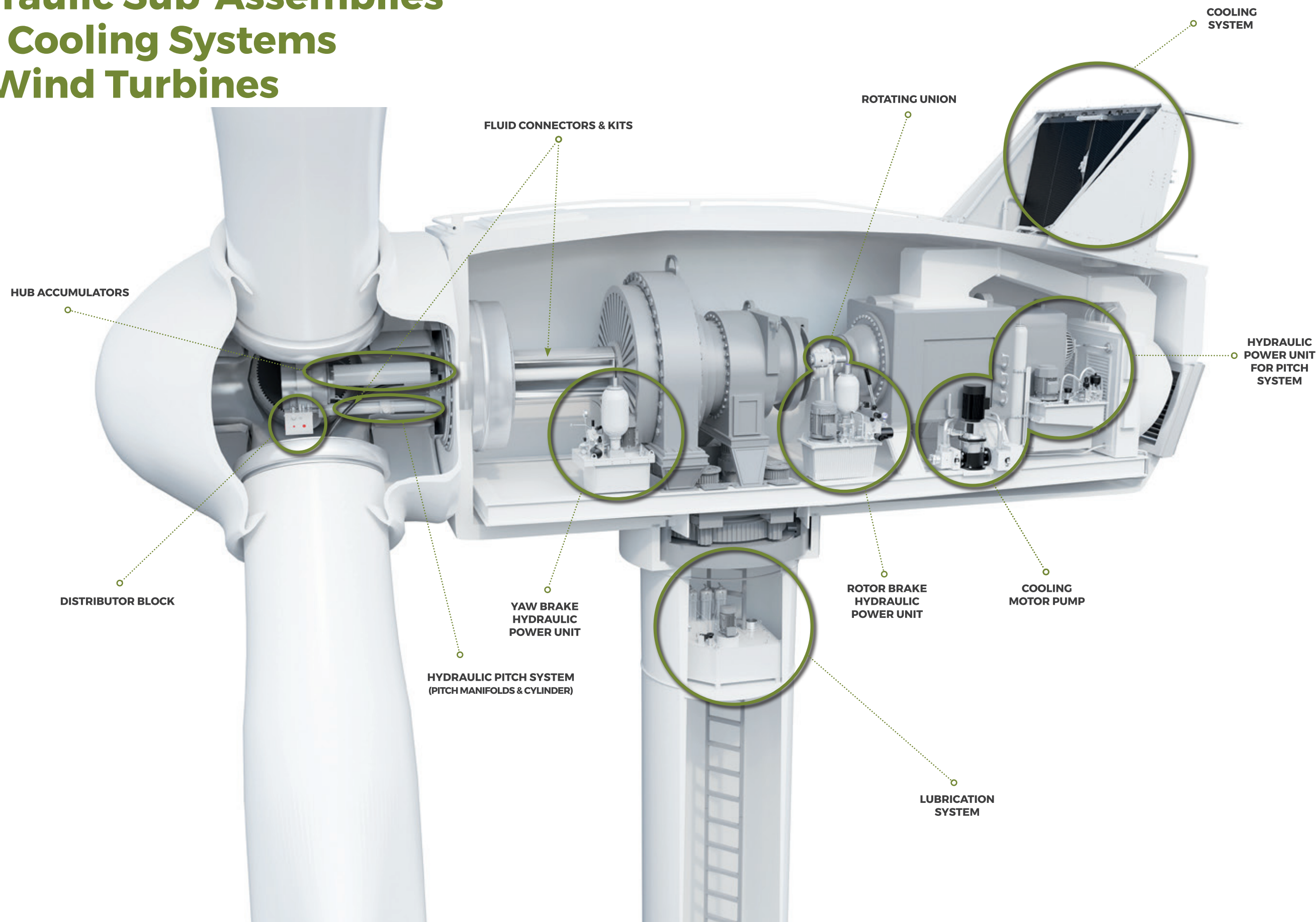
195,000 PITCH BLOCKS INSTALLED
(HYDRAULIC POWER UNIT WITH PITCH BLOCK)

30,000 PITCH CYLINDERS INSTALLED

5,000 COOLING SYSTEMS INSTALLED

R+D FACILITIES FOR MULTI-PLATFORM TESTING
(3MW TO 10 MW)

Hydraulic Systems, Hydraulic Sub-Assemblies and Cooling Systems for Wind Turbines



SOLAR POWER

Solar Markets Warm Up

Hine Group delivers the production capacity and flexibility to offer solar energy customers a comprehensive package of quality products and full service-domestically and internationally.

Our dedicated engineering teams can match your working processes to develop prototypes, test systems and components under field conditions, and adapt systems to specific needs while guaranteeing maximum performance.

Organizations that are developing solar photovoltaic (PV) and concentrated solar power (CSP) need top-quality engineering solutions and a rapid response to their needs. Thanks to our international presence, Hine guarantees a complete service to our customers on their current and future projects: Competitive and reliable hydraulic solutions from production through operation and maintenance.

For clients engaged in building solar systems, Hine helps accelerate implementation to gain a market advantage and capitalize on growth. Hine is the most experienced company offering hydraulics in solar applications and this allows us to offer cost competitiveness to our clients.

38 CONCENTRATED SOLAR POWER (CSP) PLANTS

3,374 MW INSTALLED

30,000 + HYDRAULIC GROUPS DEPLOYED

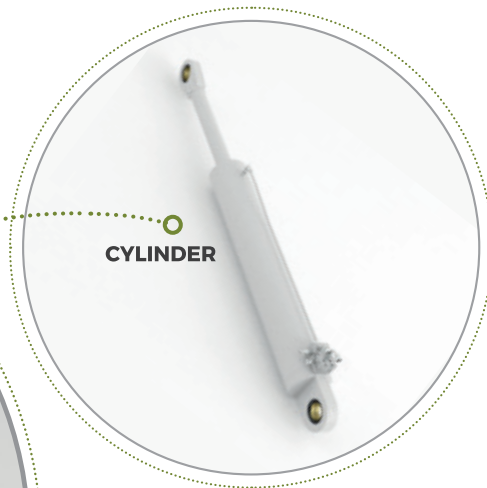
70,000 CYLINDERS INSTALLED

PROJECTS ON 4 CONTINENTS

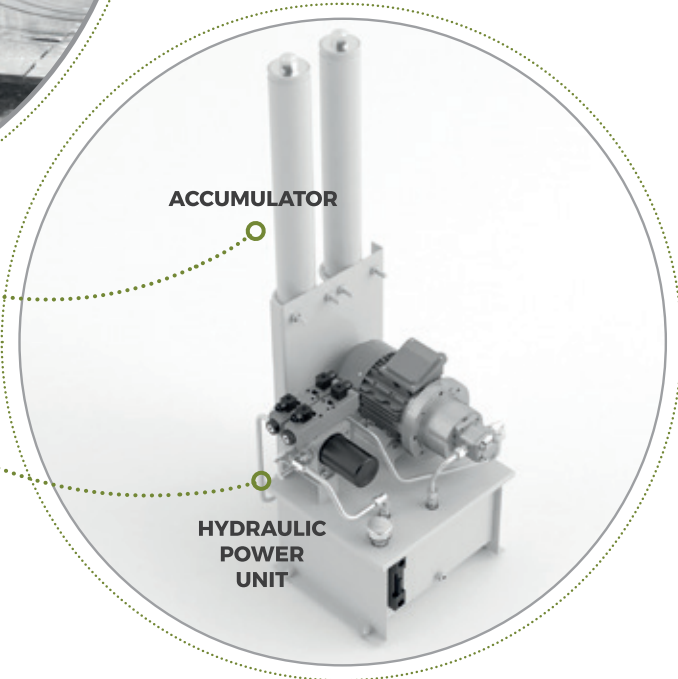
14 YEARS LEADING IN HYDRAULICS FOR THE SOLAR MARKET

High-quality Hydraulic Systems for Parabolic Trough and Central Power Technology

PARABOLIC TROUGH TECHNOLOGY



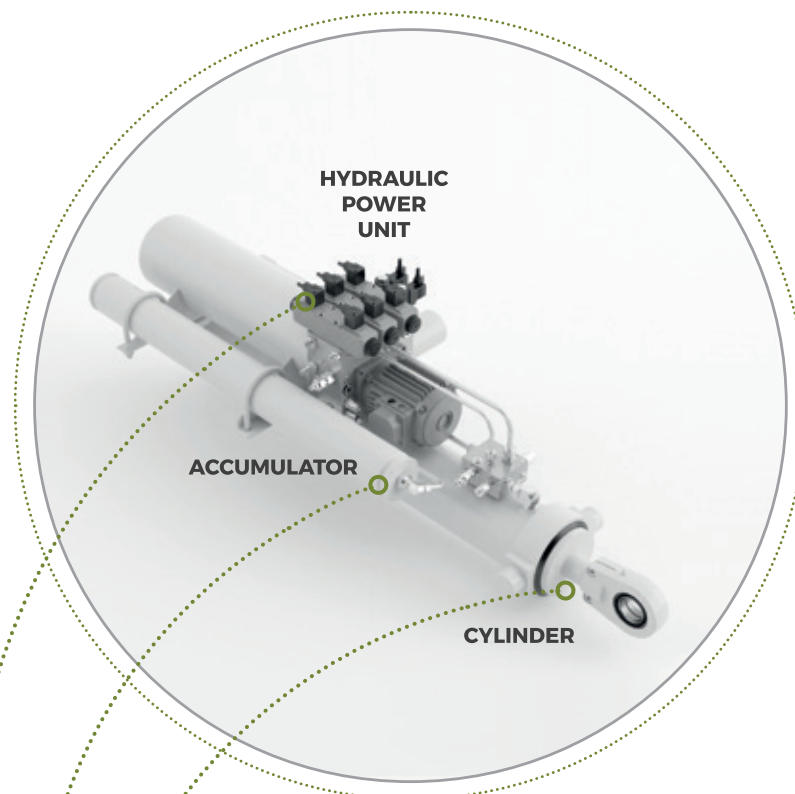
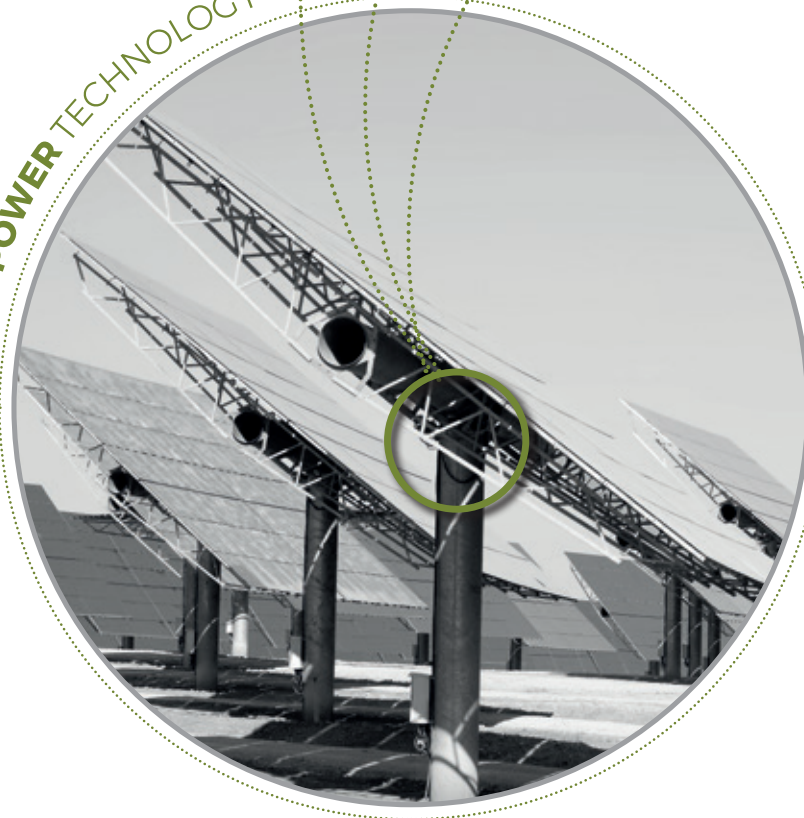
CYLINDER



ACCUMULATOR

HYDRAULIC
POWER
UNIT

CENTRAL POWER TECHNOLOGY



HYDRAULIC
POWER
UNIT

ACCUMULATOR

CYLINDER

INDUSTRIAL

Industrial Applications, Higher Precision

As industrial applications for powerful hydraulic systems evolve, so do Hine products. Our high-quality, versatile hydraulic cylinders move larger objects, shape new forms, lift heavier loads, dig deeper tunnels, and haul more materials. They meet the most demanding customer requirements with power, efficiency, high precision, and outstanding stability.

Depth with Global Reach

Hine designs, develops, manufactures, and distributes hydraulic systems and components known for their superior value. Developed with decades of experience and state-of-the-art manufacturing techniques, our solutions deliver high quality at competitive price points. You'll find Hine solutions hard at work in manufacturing, transportation, mills, marine, construction, and other markets around the world. We export more than 80% of our solutions internationally.

SECTORS

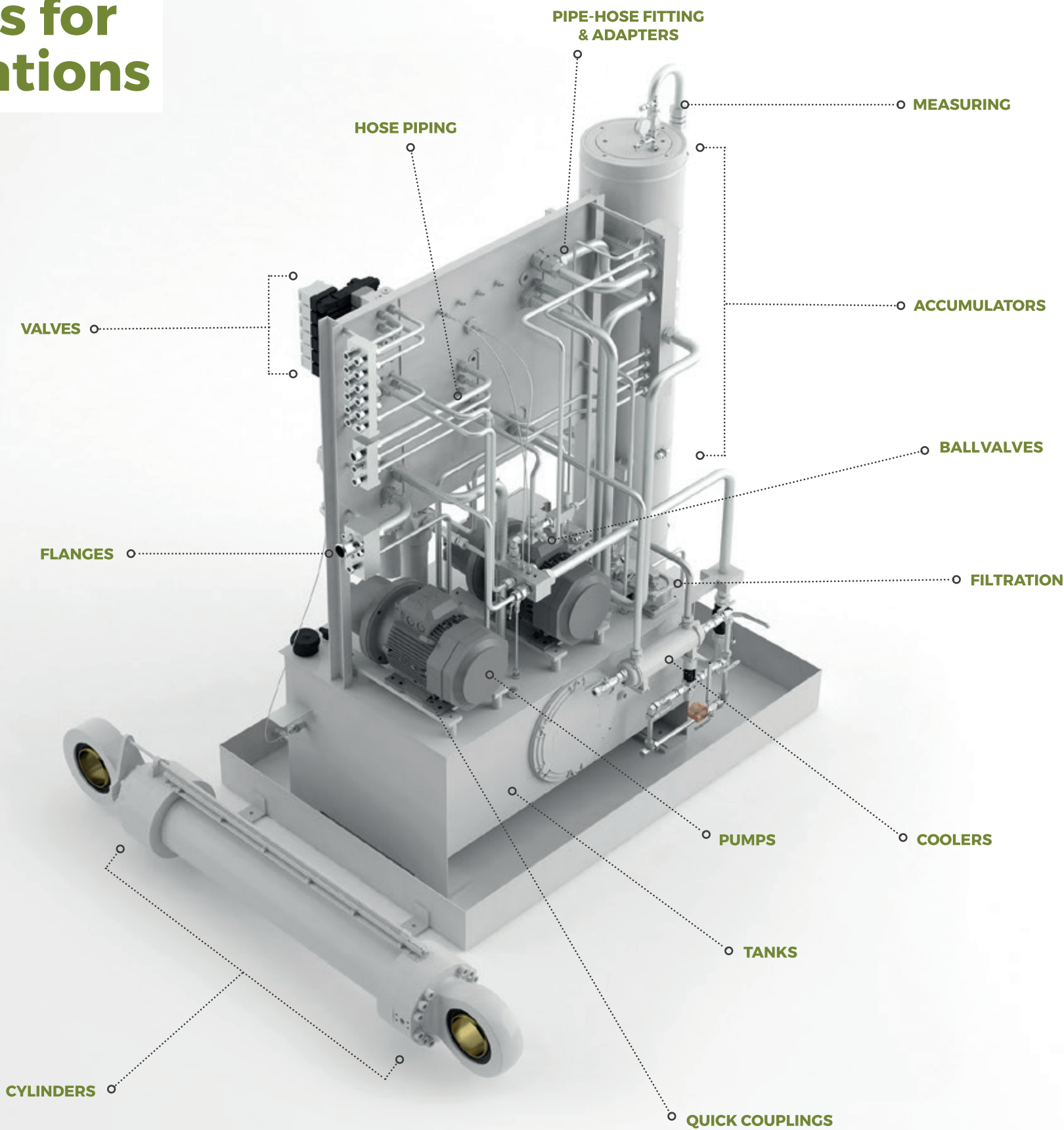
- MACHINE TOOL
- RAILWAY
- IRON AND STEEL
- SPECIALIZED MACHINERY
- CAPITAL EQUIPMENT
- HYDROELECTRIC
- MARINE
- PAPER MILL
- AERONAUTICS
- LIFTING AND CONSTRUCTION
- MINING
- PUBLIC WORKS



INNOVATING
IN HYDRAULIC
SOLUTIONS

HINE

Hydraulic Systems and Components for Industry Applications



Global Aftermarket Service & Distribution

Hine solutions are developed using superior-quality products from highly reputable, prestigious companies. Our partners are world leaders in quality hydraulics components and services.

SPARE PARTS AND CONSUMABLES

Hine offers hydraulic components and systems built to last a machine's life time. We work out a solution tailored to our client's needs and they receive the appropriate, cost-saving spare part at a demand-adjusted delivery time. We have an extensive stock of spare parts ready to support our customers' requests.

REPAIRS

At Hine, we offer repair programs for out-of-warranty components. We also diagnose and evaluate component condition through data acquisition by master technicians. We have the knowledge to ensure the best possible solution for handling repairs to your hydraulic systems and components.

UPGRADE PROGRAMS

Hine can also reverse-engineer hydraulic failures in the field and develop retrofits that improve performance of existing hydraulic systems. Our R&D engineers continuously develop and create upgrade kits to improve hydraulic solutions, extend the lifetime of the installed equipment, and to be deployed in new machines. HINE has also its own Research Center: a test center, a prototype assembly area, and a validation laboratory to support our clients' product development in-house.

TECHNICAL SUPPORT & TRAINING

Hine provides on-site services when needed, as well as training sessions to support clients' Field Engineers. We are readily available to support our customers while ensuring the best service. We also follow-up with after-sales support, including product training, troubleshooting, consultancy and field services, all of which are conducted by our team of professional hydraulic technicians.



Global Footprint

PRESENCE IN THE WORLD'S **5** TOP-RANKED COUNTRIES

7 PRODUCTION SITES

OUR GLOBAL PRESENCE IS YOUR ADVANTAGE

We stay close to our customers. Seven production sites in five continents -Spain, US, Brazil, India and China- enable fast, reliable and homogenous delivery so clients can accelerate project readiness. Our production sites are strategically distributed around the globe so we can offer the highest manufacturing competitiveness. This gives Hine access to talent and cost advantages that benefit all clients. We can meet high-volume requirements, and we maintain a large stock of hydraulic components for rapid response to clients' needs.



PRODUCTION SITES



SPAIN



SPAIN



USA



BRAZIL



INDIA



CHINA

R+D is our lifeblood

R&D Ensures Continuous Innovation

Hine is well known in R&D forums for our strong R&D expertise, leading-edge visualization and testing tools, and a dedicated research center. We also collaborate with other leading research centers to test, develop, and validate our solutions. Each year we present several projects to Renewables and Industrial R&D forums. And the result of our efforts is the ability to help you find answers to new challenges.

IN-HOUSE ENGINEERING

Our own in-house engineering team blends more than 40 years of industrial experience and a tradition of quality with state-of-the-art manufacturing. This unique combination means that hydraulic systems are built on proven, efficient, and reliable platforms.

Engineering as a core competence means that our customers can rely on us from the very onset of projects. We are proud to work side by side with our customers in the creative process to help build a better world.

ALLIANCES

Together, we are stronger. We collaborate with internationally recognized research centers to test and develop our solutions. These alliances expand our know-how and build in the ability to tackle more ambitious challenges.

RESEARCH CENTER

Our Research Center is much more than a building, it is a philosophy. Our commitment towards our future. In 2017, Hine opened its own Research Center: a test center, a prototype assembly area, and a validation laboratory to support in-house our client's product development. We strive to stay at the forefront of technology through constant investment in staff training and in cutting-edge equipment.



Choose a global leader for your hydraulic solutions

Hine's commitment doesn't begin and end with solution delivery. We are with you every step of the way from R&D, prototype design, turn-key system delivery, and ongoing support. Rely on our complete services package for everything you need, whether it's regular maintenance and repairs, or emergency support.

Hine is dedicated to your success.



COMPETITIVENESS

COMPREHENSIVE, COMPETITIVE SOLUTIONS. The widest range of hydraulic products.

IN-HOUSE ENGINEERING.

Years of experience and tradition with state-of-the-art manufacturing.

PROXIMITY TO CUSTOMERS.

Extensive expertise, rapid response times, and technical support to ensure maximize uptime and productivity.

LOCAL COST COMPETITIVENESS.

Production sites in low cost countries enable Hine to deliver high quality products with cost effectiveness.

SOCIAL RESPONSIBILITY.

We take quality, environmental responsibility, and best practices seriously:
ISO 90001 Quality Certification
ISO 14001 Environmental Certification
OHSAS 18001 Safety Certification



EXPERIENCE

MORE THAN 40 YEARS DEDICATED TO HYDRAULICS.

Our experience allows clients to compete more successfully

MORE THAN TWO DECADES IN THE WIND SECTOR.

More than 65,000 wind turbines equipped by Hine globally.

MORE THAN A DECADE LEADING THE SOLAR MARKET.

3,374 Installed in 38 solar thermal plants.

POWERFUL PARTNERSHIPS.

Our solutions are developed using superior-quality products from highly reputable, prestigious companies.



GLOBALIZATION

GLOBAL FOOTPRINT. 7 production sites - in Spain, U.S., Brazil, India, and China - enable fast, reliable solution delivery so clients can accelerate project readiness.

650 QUALIFIED PROFESSIONALS WORLDWIDE ready to help client gain a competitive advantage internationally.



HINE HEADQUARTERS SPAIN

HINE INDUSTRIAL

POLIGONO INDUSTRIAL
KAROBI 6005, APDO. 60
20212 OLABERRIA
GIPUZKOA. SPAIN
T: +34 943 884 600
F: +34 943 884 450
es-hine@hinegroup.com

HINE RENEWABLES

POLIGONO INDUSTRIAL
ALTUNE 6010 - APDO. 84
20212 OLABERRIA
GIPUZKOA. SPAIN
T: +34 943 162 020
F: +34 943 888 450
es-hre@hinegroup.com

HINE BRANCHES SPAIN

HINE MOYMSA

TRAVESÍA
DE LA INDUSTRIA, 10
33401 AVILÉS
ASTURIAS. SPAIN
T: +34 985 525 757
F: +34 985 569 844
es-asturias@hinegroup.com

HINE ÁLAVA

PLAZA SIMÓN BOLÍVAR,
13 BAJO
01003 VITORIA-GASTEIZ
ÁLAVA. SPAIN
T: +34 945 259 158
F: +34 945 254 373
es-alava@hinegroup.com

HINE VIZCAYA

PASEO LANDABERRI, 4
BAJO DER., EDIF. GOBELAS
48940 LEIOA
VIZCAYA. SPAIN
T: +34 944 634 311
F: +34 944 647 929
es-vizcaya@hinegroup.com

HINE CATALUÑA

C/ ROSA DE LUXEMBURG, 18
LOCAL 1
08960 SANT JUST DESVERN
BARCELONA. SPAIN
T: +34 936 472 260
F: +34 936 377 510
es-barna@hinegroup.com

HINE GALICIA

C/FOTÓGRAFOS
IRMANOS SARABIA, N° 4 ENTR.
36203 VIGO
PONTEVEDRA. SPAIN
T: +34 986 473 912
F: +34 986 494 147
es-galicia@hinegroup.com

HINE MADRID

AVD. DEL SISTEMA SOLAR 13,
NAVE 14
28830 S. FERNANDO DE HENARES
MADRID. SPAIN
T: +34 913 838 875
F: +34 917 667 397
es-centro@hinegroup.com

HINE CÓRDOBA

C/DOLORES IBARRURI,
23 LOCAL 2
14011 CÓRDOBA
SPAIN
T: +34 957 767 151
F: +34 957 401 216
es-sur@hinegroup.com

HINE WORLDWIDE

HINE CHINA LANGFANG

#6 WORKSHOP, IN-POWER INDUSTRIAL PARK
#56 HEHUA STREET, LANGFANG ECONOMIC
AND TECHNICAL DEVELOPMENT ZONE
065001 LANGFANG - HEBEI
P. R. CHINA
T: +86 316 607 1681
F: +86 316 607 1683
cn-hine@hinegroup.com

HINE CHINA SHANGHAI

ROOM 23K, NO. 831 XINZHA ROAD,
JING'AN DISTRICT
SHANGHAI
P. R. CHINA
T: +86 21 5276 9127
cn-shanghai@hinegroup.com

HINE EUA

2510 MILFORD SQUARE PIKE
PA 18951, QUAKERTOWN,
PENNSYLVANIA. EUA
T: +1 215 536 1212
F: +1 215 536 6565
us-hine@hinegroup.com

HINE INDIA

N.O 446/7 & 446/8,
PAPPARAMBAKKAM VILLAGE,
THIRUVALLUR DISTRICT
PIN CODE -- 602 025,
TAMIL NADU
INDIA
T: +91 44 3316 0500
in-hine@hinegroup.com

HINE BRAZIL

AV. VITÓRIA ROSSI MARTINI,
344 - CEP 13347-613 /
INDAIA TUBA
SÃO PAULO
BRAZIL
T: +55 19 3936 8400
br-hine@hinegroup.com